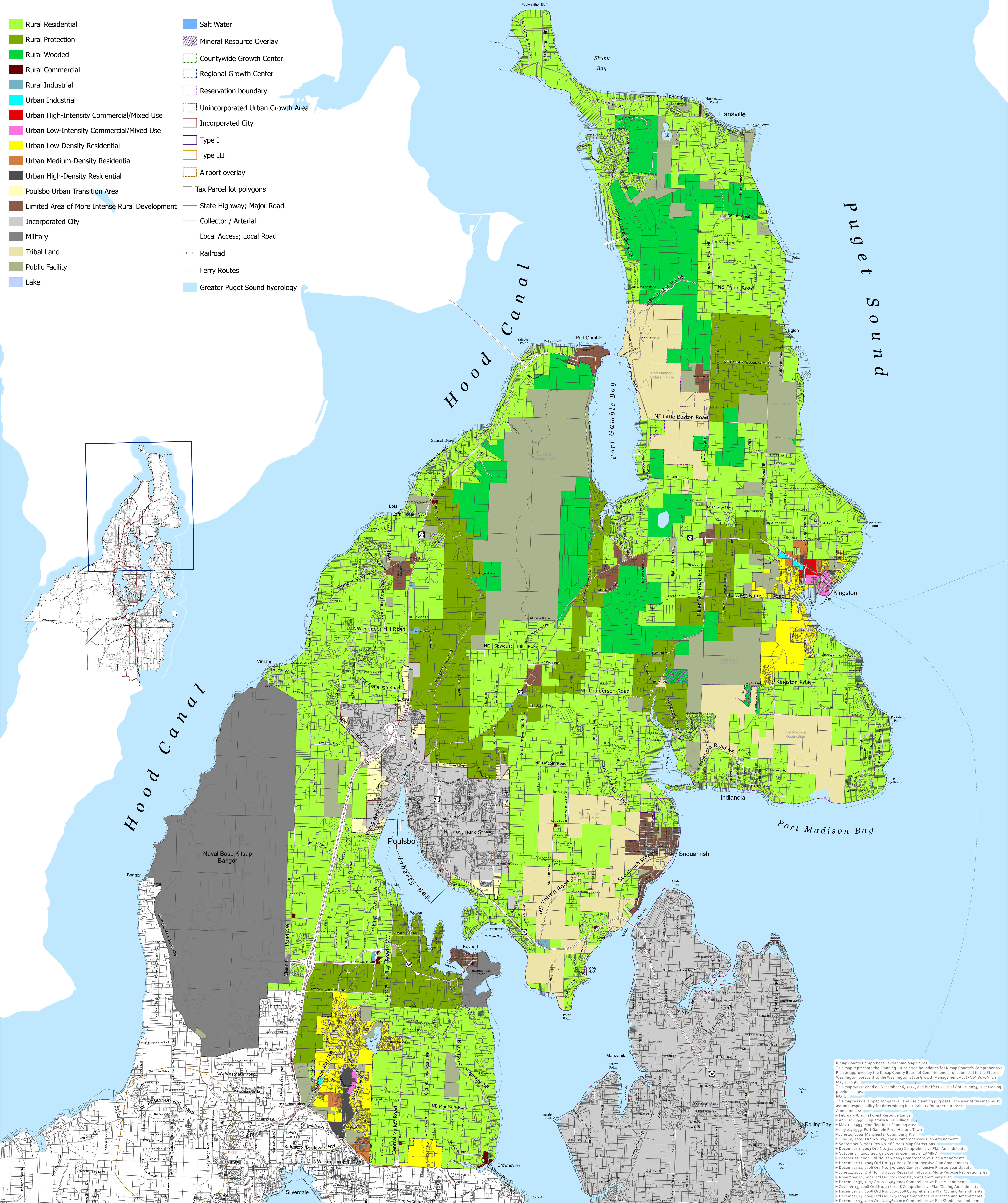


North Kitsap - Commissioner District 1



- Rural Residential
- Rural Protection
- Rural Wooded
- Rural Commercial
- Rural Industrial
- Urban Industrial
- Urban High-Intensity Commercial/Mixed Use
- Urban Low-Intensity Commercial/Mixed Use
- Urban Low-Density Residential
- Urban Medium-Density Residential
- Urban High-Density Residential
- Poulsbo Urban Transition Area
- Limited Area of More Intense Rural Development
- Incorporated City
- Military
- Tribal Land
- Public Facility
- Lake
- Salt Water
- Mineral Resource Overlay
- Countywide Growth Center
- Regional Growth Center
- Reservation boundary
- Unincorporated Urban Growth Area
- Incorporated City
- Type I
- Type III
- Airport overlay
- Tax Parcel lot polygons
- State Highway; Major Road
- Collector / Arterial
- Local Access; Local Road
- Railroad
- Ferry Routes
- Greater Puget Sound hydrology

Kitsap County Comprehensive Planning Map Series
 This map represents the Planning Jurisdiction boundaries for Kitsap County's Comprehensive Plan as approved by the Kitsap County Board of Commissioners for submission to the State of Washington pursuant to the Washington State Growth Management Act (RCW 36-70A) on May 7, 2016. Ord No. 389-2009 Repeal of Industrial Multi-Purpose Recreation Area.
 This map was revised on December 15, 2024, and is effective as of April 1, 2025, superseding previous maps.

NOTE:
 This map was developed for general land use planning purposes. The user of this map must assume responsibility for determining its suitability for other purposes.

- February 8, 1999 Forest Resource Lands
- April 19, 1999 Suquamish Rural Village
- May 29, 1999 Modified Joint Planning Area
- July 21, 1999 Port Gamble Rural Historic Town
- June 30, 2000 Manchester Community Plan
- June 30, 2002 Ord No. 274-2002 Comprehensive Plan Amendments
- September 8, 2003 Res No. 168-2003 Map Corrections
- December 8, 2003 Ord No. 311-2003 Comprehensive Plan Amendments
- October 25, 2004 George's Corner Commercial LAMIRD
- October 25, 2004 Ord No. 335-2004 Comprehensive Plan Amendments
- December 21, 2005 Ord No. 495-2005 Comprehensive Plan Amendments
- December 11, 2006 Ord No. 370-2006 Comprehensive Plan 10-year Update
- June 11, 2007 Ord No. 389-2007 Repeal of Industrial Multi-Purpose Recreation Area
- November 29, 2007 Ord No. 402-2007 Keyport Community Plan
- December 31, 2007 Ord No. 405-2007 Comprehensive Plan Amendments
- October 12, 2008 Ord No. 444-2008 Comprehensive Plan/Zoning Amendments
- December 23, 2008 Ord No. 420-2008 Comprehensive Plan/Zoning Amendments
- December 14, 2009 Ord No. 443-2009 Comprehensive Plan/Zoning Amendments
- December 15, 2010 Ord No. 459-2010 Comprehensive Plan/Zoning Amendments
- December 15, 2010 Ord No. 467-2010 Type III LAMIRD
- August 31, 2012 Ord No. 439-2012 Urban Growth Area - Remand
- December 13, 2012 Ord No. 495-2012 Comprehensive Plan/Zoning Amendments
- January 15, 2014 Ord No. 511-2013 Gost Watershed Plan
- June 30, 2016 Ord No. 594-2016 Comprehensive Plan 10-year update
- March 23, 2018 Ord No. 565-2018 Rezone
- December 10, 2018 Ord No. 565-2018 Comprehensive Plan/Zoning Amendments
- December 10, 2019 Ord No. 553-2019 Comprehensive Plan/Zoning Amendments - Remand
- April 27, 2020 Ord No. 587-2020 Comprehensive Plan/Zoning Amendments
- November 21, 2021 Ord No. 609-2021 Comprehensive Plan/Zoning Amendments
- December 13, 2022 Res No. 232-2022 Development Agreement/Zoning Amendments
- January 10, 2023 Ord No. 609-2022 Comprehensive Plan/Zoning Amendments
- April 24, 2024 Ord No. 622-2024 Comprehensive Plan/Zoning Amendments
- November 13, 2024 Ord No. 628-2024 Rezone
- December 16, 2024 Ord No. 637-2024 Comprehensive Plan Update


This map was created from existing map sources, not from field surveys. Determination of fitness for use lies with the user, as does the responsibility for understanding the accuracy and limitations of this map and data.

The information on this map may have been collected from various sources and can change over time without notice.

While great care was taken in making this map, there is no guarantee or warranty of its accuracy as to labeling, placement or location of any geographic features present. This map is intended for informational purposes only and is not a substitute for a field survey.

Kitsap County and its officials and employees assume no responsibility or legal liability for the accuracy, completeness, reliability, or timeliness of any information on this map.

Map Published Date: April 1, 2025



Comprehensive Plan Land Use Map

Kitsap County Department of Community Development
 619 Division Street, MS-36, Port Orchard, Washington 98366
 VOICE (360) 337-5777 * <https://www.kitsapgov.com/dcd/>

